



DR. ETHIX
ANALYTICAL LAB

**OUR PERSONAL
PHARMACEUTICAL
REGULATORY
CONSULTANCY DIVISION
WITH INDUSTRY-CLASS
EXPERIENCE**



A fast-growing consultancy organization offering complete pharmaceuticals (allopathy, homeopathy, herbal, cosmetics food industry, and medical devices) turnkey solutions for new facilities with a dedicated and highly skilled workforce. Serving the pharmaceutical industry since 2005, driven by a team of highly experienced and motivated professionals and experts. With a strong history of innovation, our experts seek out not only the most up to date equipment but also the most logical solutions for our clients.

ABOUT US :-

- We are a quickly developing consultancy association offering total drugs (allopathy, homeopathy, natural, beautifiers food industry, and clinical gadgets) turnkey solutions for new plants, manufacturers, and upgrading ones with a devoted and exceptionally talented Engineer's force. Serving the drug business since 2005, driven by a group of profoundly experienced and persuaded experts and specialists. With a solid history of development, our specialists search out the most exceptional gear as well as the most legitimate answers for our customers. We work with our customers' norms as our main concern and have confidence in an exceptionally open life-cycle for each task. Draw on our broad involvement with effectively finishing complex designing undertakings in steel plants far and wide and our unmatched pledge to your outcomes. We provide pharmaceutical Project designing as per the regulatory requirement of schedule-M, WHO, GMP, USFDA, MHRA, TGA, Architectural Drawing, Man & material flow Drawings, Mechanical & Engineering. drawing of the facility is ensured. We also provide complete civil and structural engineering designs showing the general layout and detailed drawings
- for RCC, structural steel, and allied works. Several other assistance is provided by us.

- On the off chance that you need an update with a decent consultancy with the best expert from India, Please return us. You can find out about our organization at <http://www.ethix.in/>



DR. ETHIX
ANALYTICAL LAB



DR. ETHIX
ANALYTICAL LAB



OUR

SPECIALITIES



Allopathy

Allopathy Project Designing as per Schedule-M, WHO, GMP, EU GMP USFDA, MHRA, PIC/S, TGA, Architectural Drawing Man & Material Flow Drawings Mech. & Engg. drawing of facility.



Herbal

Herbal Project Designing as per Schedule-M, WHO, GMP, Architectural Drawing Man & material flow Drawings Mech. & Engg. drawing of facility.



Homeopathy

Herbal Project Designing as per Schedule-M, WHO, GMP, Architectural Drawing Man & material flow Drawings Mech. & Engg. drawing of facility.



APIs & Fine Chemicals Plant

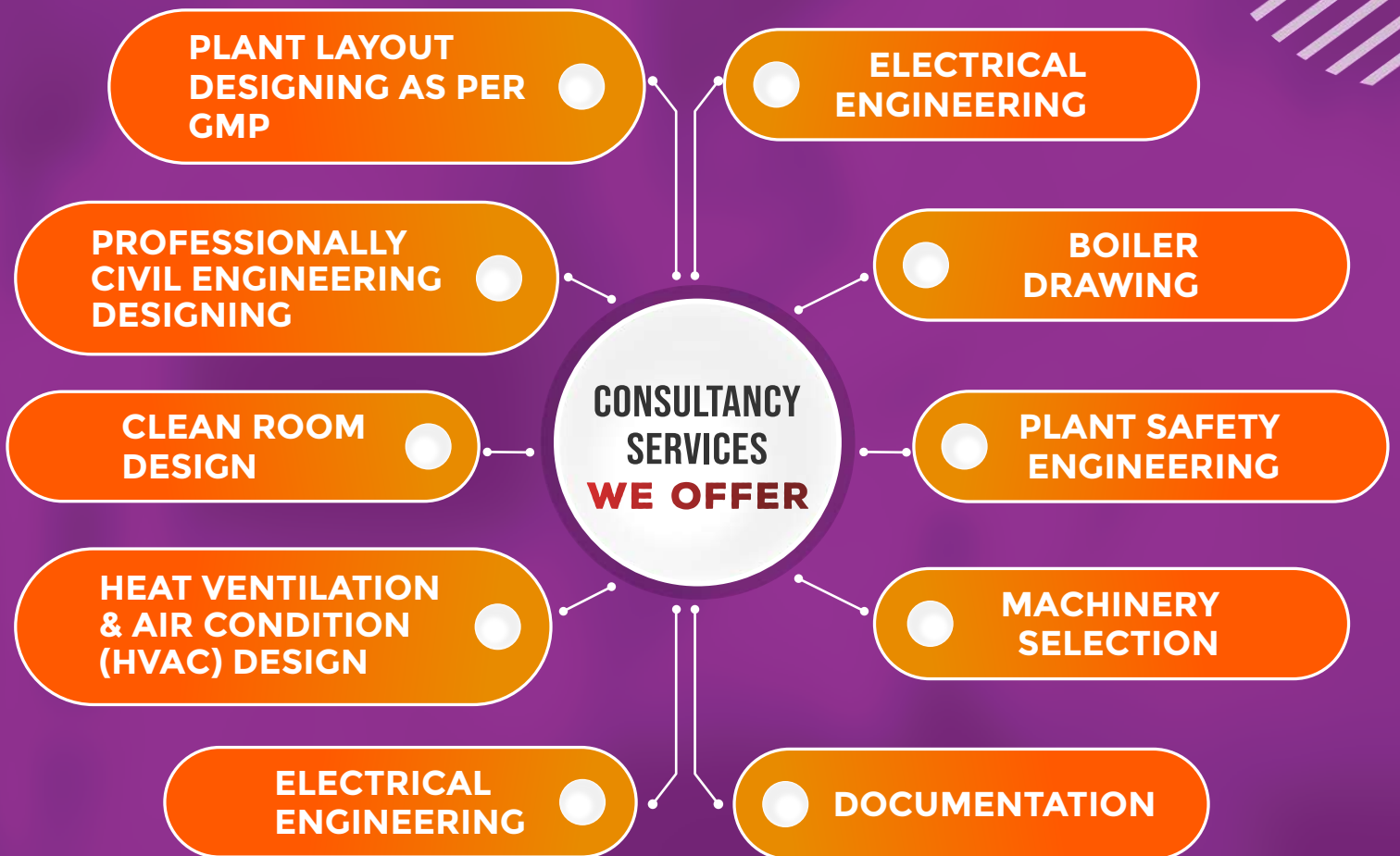
Setting up facilities in accordance with cGMP of international regulatory authorities. We Maintain Hi Temperature and Hi Pressure reactions With Design of containment systems and Completely automated processes.



Analytical, Pathogens Microbiology Labs

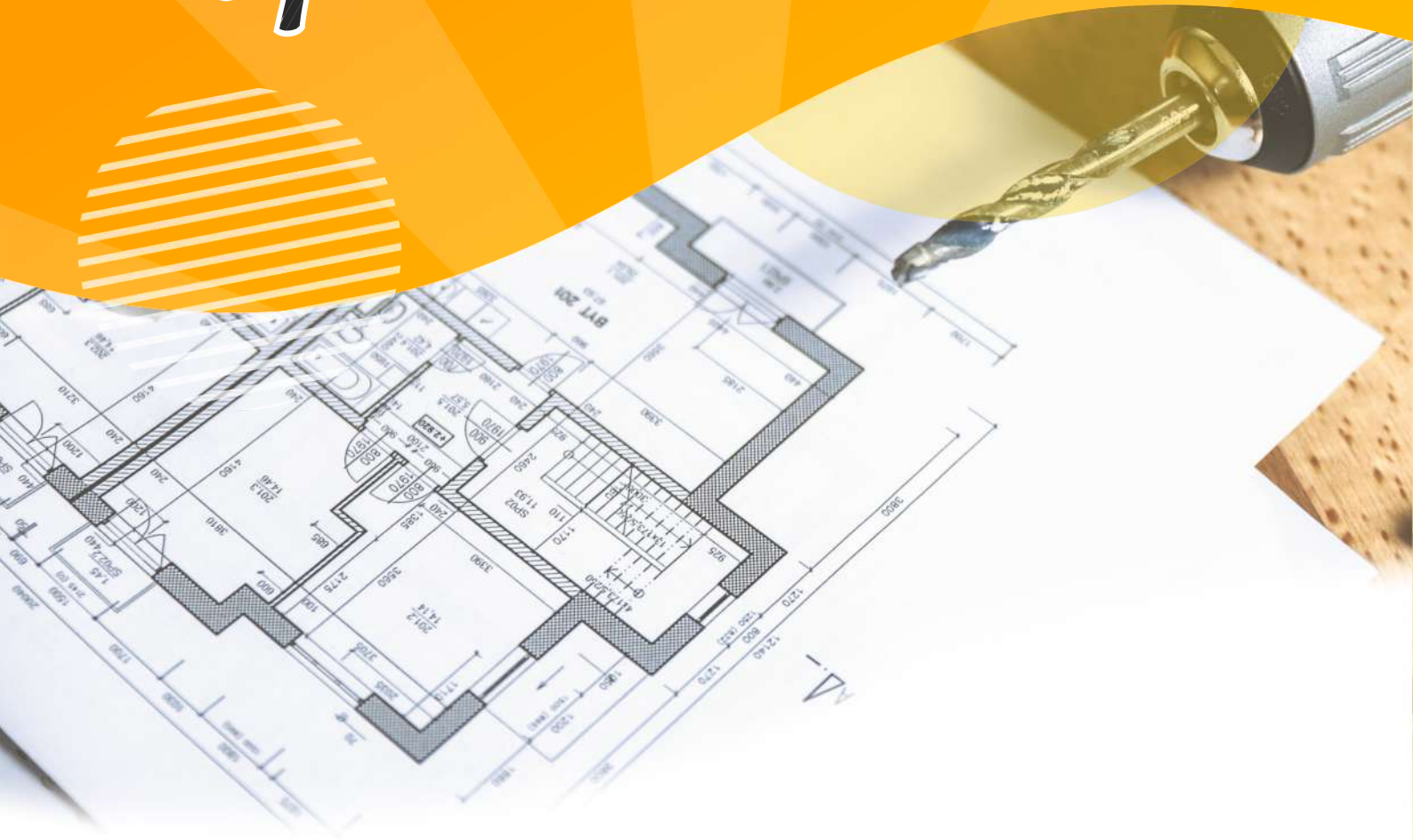
QC & Micro ,Drugs & FSSAI, project Designing as per NABL, NABH, ICMR Norms (BSL-2, BSL-3, BSL-4), Schedule-M norms Architectural Drawing of facility Lab Furniture Design as per Norms

SERVICES WE OFFER



DR. ETHIX
ANALYTICAL LAB

Plant layout designing as per **GMP**



■ **Pharmaceutical Project designing as per the regulatory requirement of schedule-M, WHO, GMP, USFDA, MHRA, TGA**

■ **Architectural Drawing**

■ **Man & material flow Drawings**

■ **Mech. & Engg. drawing of facility**



DR. ETHIX
ANALYTICAL LAB

CLEAN ROOM DESIGN



- To Install Clean Room of class 100 to 100000 HVAC Project

- Design and detailed specifications and tender drawings for all items requirement related to HVAC

- Area Classification

- Contamination Control

- Clean Room



DR. ETHIX
ANALYTICAL LAB



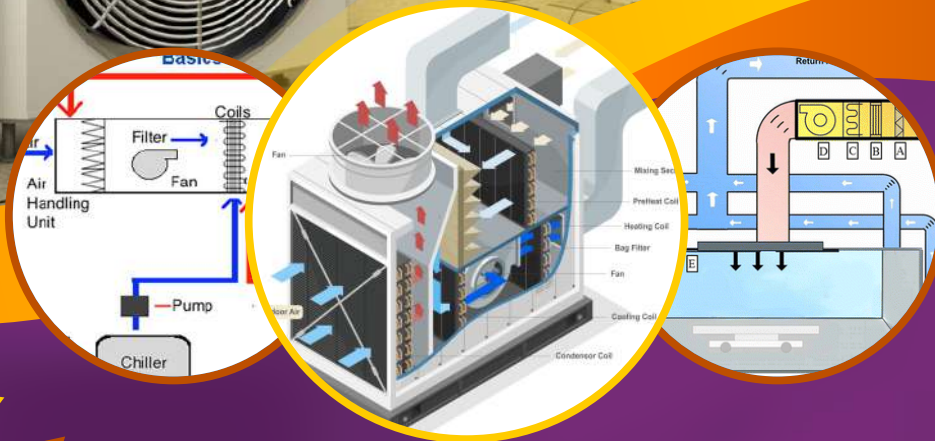
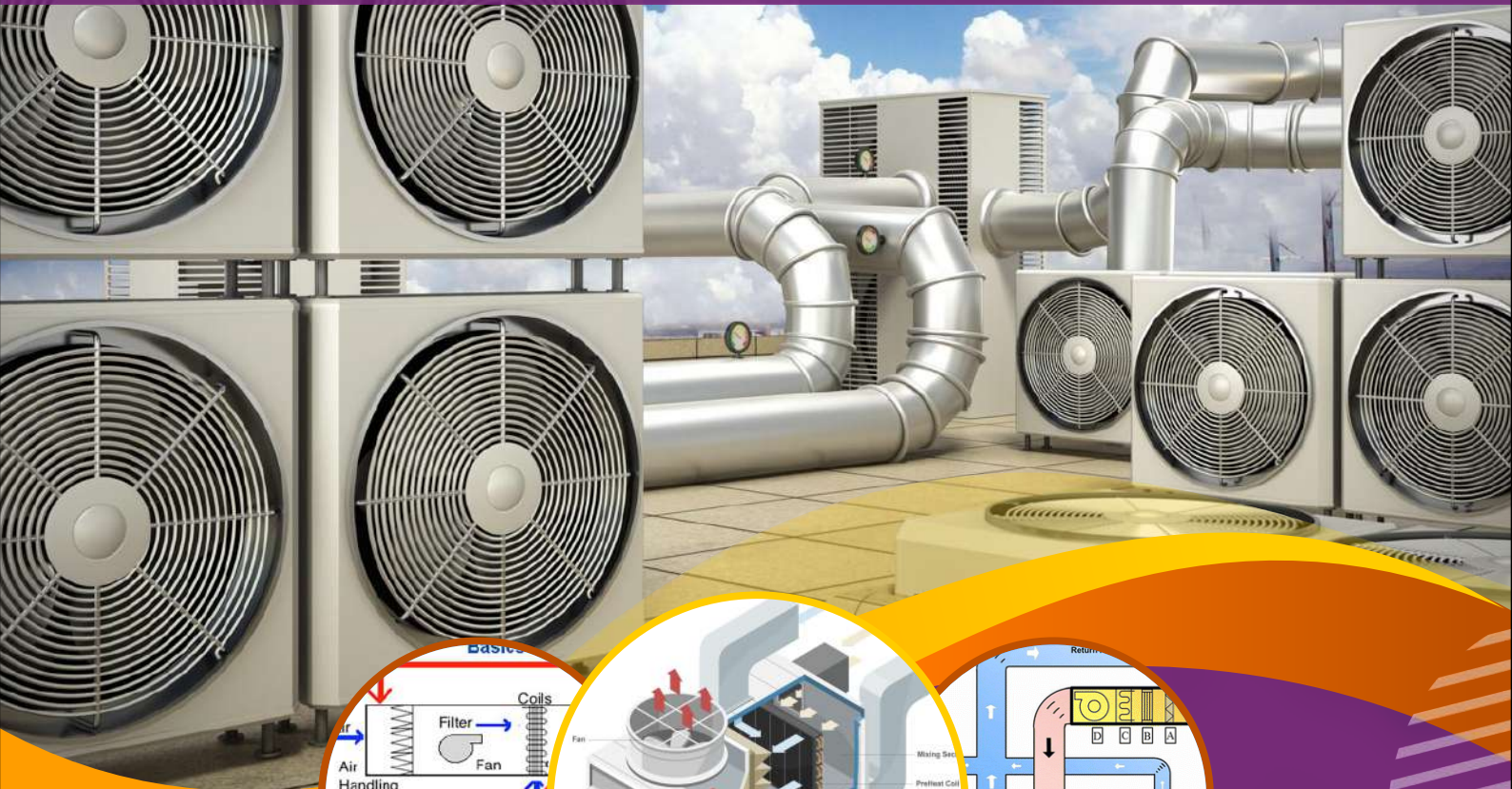
DR. ETHIX
ANALYTICAL LAB



PROFESSIONAL CIVIL ENGINEERING DESIGNING

- ▶ Complete civil and structural engineering designs showing the general layout and detailed drawing for RCC, structural steel, and allied works.
- ▶ Foundation drawings for equipment
- ▶ Design and drawings for cable racks or busbar pipe racks and bridges and their foundations
- ▶ Civil and Structural drawing of plant Building Considering GMP requirement.
- ▶ Construction Management
- ▶ Specification for the floor, Wall, Ceiling, in Plant.
- ▶ Specification for cleanroom portion panels, door, windows

HEAT VENTILATION & AIR CONDITION (HVAC) DESIGN



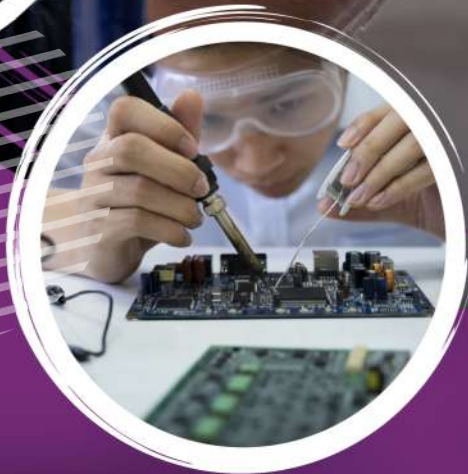
- ▶ Air Handling Unit (AHU) – Double Skin/ Single Skin
- ▶ HVAC single line airflow diagrams as per GMP requirement
- ▶ Chiller & AHU piping and ducting layout drawing with the proposed location of HVAC equipment
- ▶ AHU grouping, AHU Filtration level drawing, Room Classification, Pressure Zoning
- ▶ AHU DQ, IQ, OQ, PQ, etc.



DR. ETHIX
ANALYTICAL LAB



DR. ETHIX
ANALYTICAL LAB



ELECTRICAL ENGINEERING

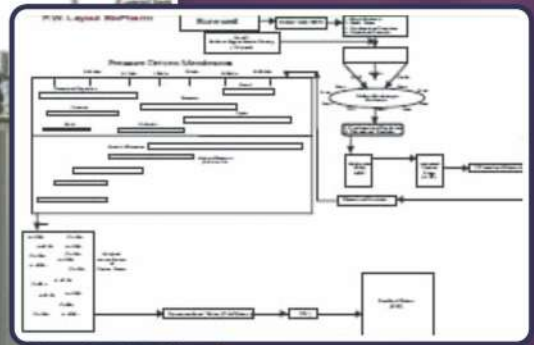
- Design Engineering of Electrical distribution in Plant

- Drawing & designing of high tension Yard (HT Yard)

- Cable Specification, Transformer, VCB, Isolate Panel, LT Panel, Utility panel,

- HVAC Panel, Water plant panel, Cable tray layout, Earthing, fire alarm, Networking, UPS Etc Drawing.

PLANT UTILITY Design



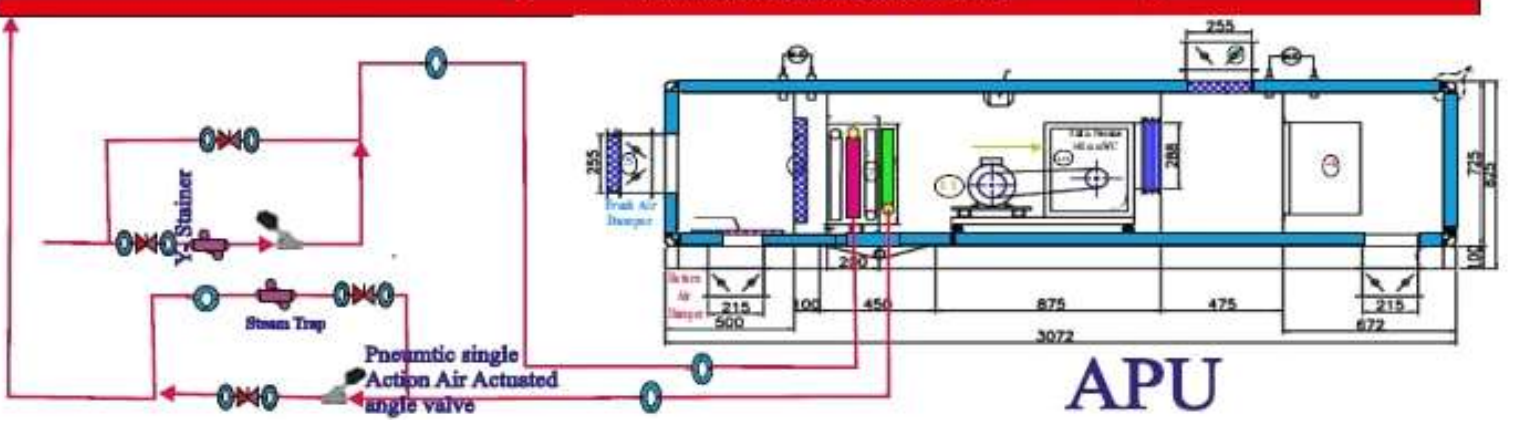
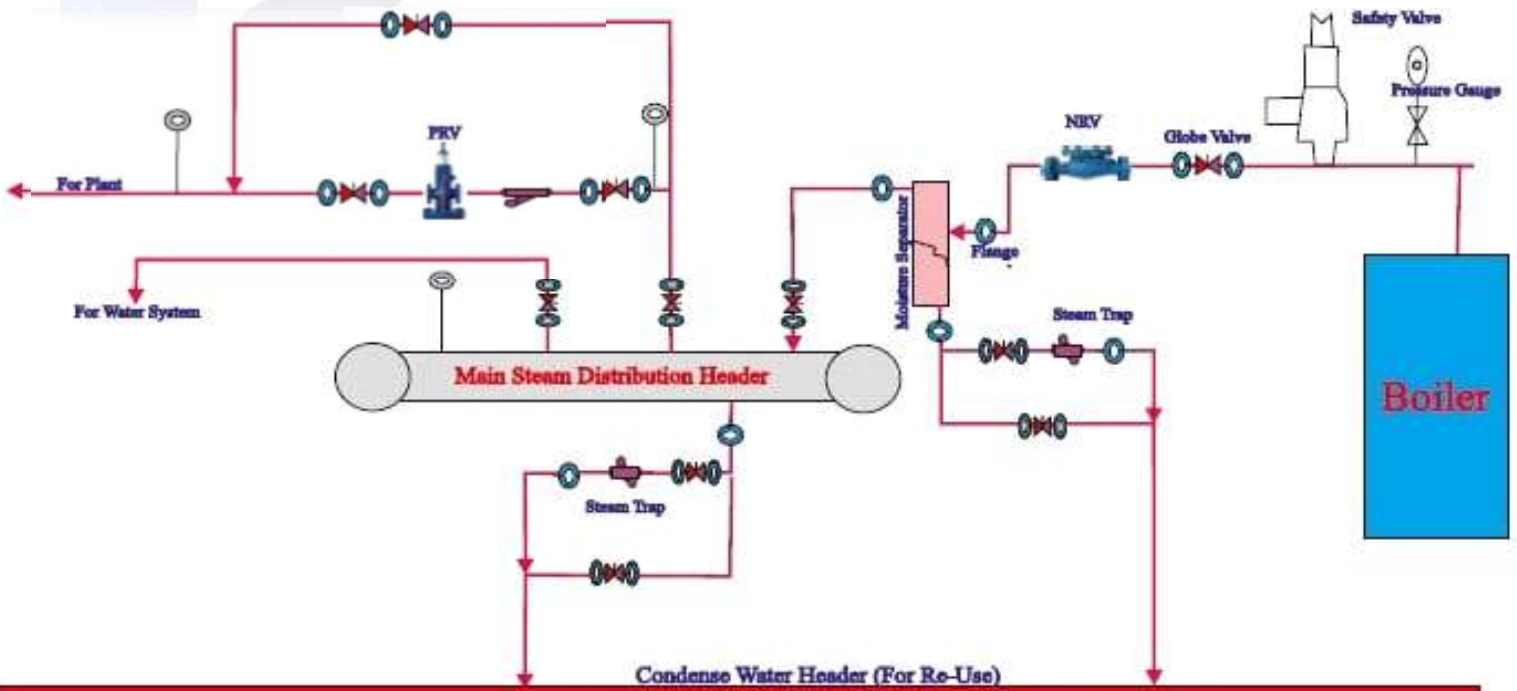
PW SYSTEM, WFI, PSG

- Selection of suitable utilities for plant
- Preparation of P & ID for the purified water plant, & distribution system
- Multi-Column Distillation Plant
- Pure Steam Generator System
- Boiler
- Air compressor system
- Central Vacuum System, Dust Extraction system
- Gas System
- CIP & SIP System
- ETP & STP



DR. ETHIX
ANALYTICAL LAB

Boiler Drawing





PLANT SAFETY ENGINEERING



- ▶ ETP (Effluent Treatment Plant) is a process design for treating the industrial wastewater for its reuse or safe disposal to the environment.
- ▶ Influent-Untreated industrial wastewater.
- ▶ Effluent-Treated industrial wastewater.
- ▶ A sludge-Solid part separated from wastewater by ETP.
- ▶ Sewage Treatment Plants (STP)



DR. ETHIX
ANALYTICAL LAB





* **MACHINERY** SELECTION *



- All Area machinery selection
- Small Volume Injections
- Ampoules
- Vials
- Sterile Dry Powder
- Cephalosporins
- Beta-Lactam
- Ophthalmic Solutions
- Ear and Nose Solutions
- Large Volume Parenteral

Oral Solid Dosage

Tablets

Capsules

Powders

Liquid Dosage Forms

Oral Liquids

External Liquids

Ointments



DOCUMENTATION

- ✓ Complete plant documentation like SOP, Batch manufacturing records, CTD dossiers, Qualification, validation, etc. Feasibility of the study report of Pharmaceutical projects: Preparation of feasibility study report including technical & financial calculations. Third-Party Inspection: Inspection feasibility of project report Clean Room design: Designing of cleanroom from ISO Class 1 to ISO Class 9 (FS209E Class 1 to Class 100,000) Designing of modular wall partition, walkable/non-walkable ceiling, Doors, windows, clean room light fittings. Preparation of specification for cleanroom modular partition, Bill of quantity(BOQ), tender documents.





DR. ETHIX
ANALYTICAL LAB



ATTENTION DRUG MAKERS
SAY NO TO DEG & EG!!

GAMBIA COUGH SYRUP DEATHS :
MOTHERS DEMAND JUSTICE.

LET US ENSURE NO CONTAMINATION IN
YOUR DRUGS.



A RELIABLE PHARMA SAMPLE TESTING LAB

**AVOID RECALL OF
YOUR PRODUCT
DUE TO NITROSAMINE
IMPURITIES!**



**AS PER
IP, BP, USP**

**Quantify 9 Nitrosamines with
GC-MS/MS & LC-MS/MS**

- NDMA
- NDPA
- NPYR
- NDEA
- NPIP
- NDELA
- NDBA
- NMOR
- NMEA



DR. ETHIX
ANALYTICAL LAB



**CDSO
APPROVED**

**NABL
ACCREDITED**

**SAVE LIVES & STAY COMPLIANT WITH
ACCURATE BET ANALYSIS**

**FROM
5% OFF!**

GRAB OFFER NOW

- ✓ Injectables
- ✓ Purified Water and
- ✓ Sterile API
- ✓ Medical Surgical Devices



**DR. ETHIX
ANALYTICAL LAB**